

Speedometer

Please read and understand following notice carefully, and correctly install and operate the product before using.



1. Please use the product accordance with the user manual strictly.
2. Please do not try to disassemble the main unit and its accessories.
3. Waterproof from front to IP65, water can enter from rear.



4. Fierce vibration and strong impact may make the product failure.
5. Little error will be happened when measuring, within normal range.

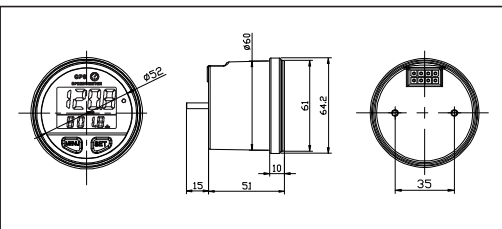


6. The product need professional installation, otherwise easily get an electric shock.
7. Not suitable for indoor use.

2 Product accessories list

Product x 1pc
User manual x 1pc
8 core joint x 1pc
8 core insert spring x 2pcs
M4 nut x 2pcs
mounting bracket x 1pc

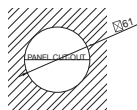
3 Product dimension



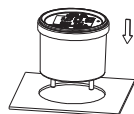
4 Product installation

1. How to install

Notice: making the fixing holes on the mounting plate.



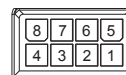
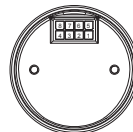
1 Install the meter into the fixing hole.



2 Fixing the mounting bracket onto plate and tightened by nuts.



2. Pinout orientation



1, 2	Voltage positive
3, 4	Voltage negative
5, 6, 7, 8	None

5 The definition of indicator light

Green light flashing	Not positioned
Green light on	Positioned
Red light on	Overspeed remind

6 Product operation

Positioning



Main interface — view total mileage



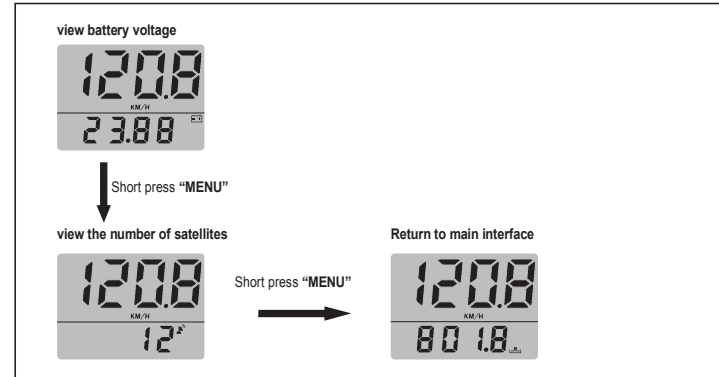
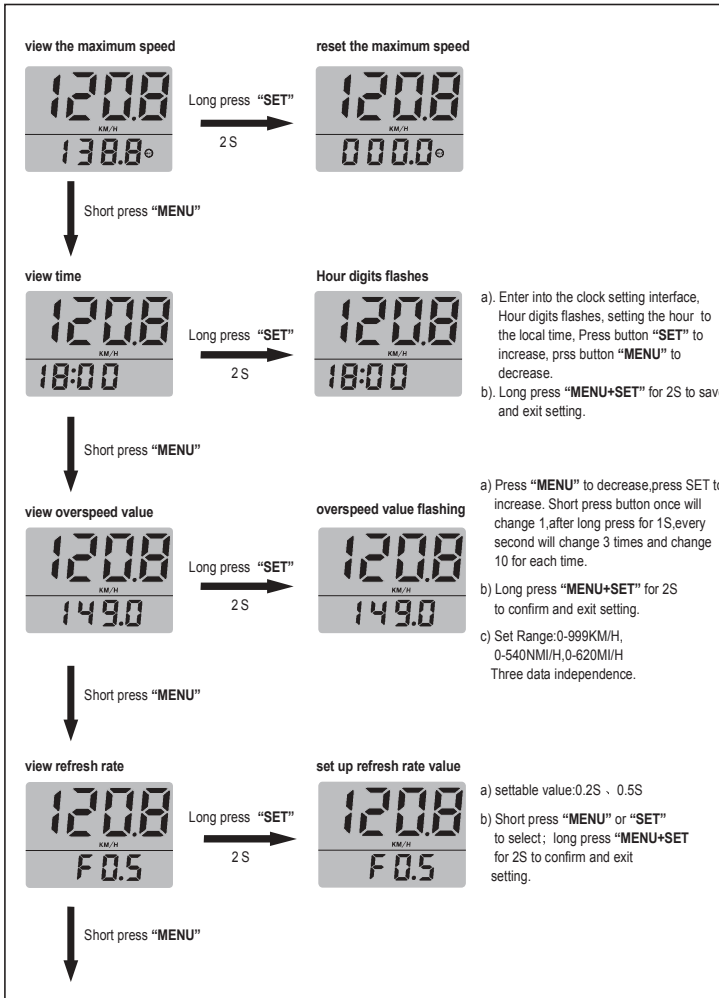
Long press "SET"
2S

Unit value flashing



Short press "MENU"

- a) unit setting: KM/H, MI/H, NM/H
- b) Short press "MENU" or "SET" to select, default unit is "KM/H".
- b) Long press "MENU + SET" for 2S to exit setting.



7 Specification & Parameter

Working voltage	DC10-24V	Time format	24-hour format
Voltage accuracy	±0.5%	Housing material	ABS+Aluminum
Refresh rate	0.5S/0.2S	waterproof level	IP65
Speed measurement range	0-999KM/H	Display mode	37x31mmLCD
The maximum recorded driving distance	0-9999KM/H	Display window size (visible)	35x24.6mmLCD
Speed unit	KM/H, MI/H, NMI/H	Product weight	150g
		Dimension	φ 64.5x66mm

8 Trouble shooting

Problems	Possible reason	Solution
No display on screen	Power is connected incorrectly	Check the power wire
No display speed	Poor reception and do not receive the satellite signals	Adjust the angle
Unclear display on LCD or color changed	1. Wrong angle of the product 2. Lack of external battery	1. Adjust the angle 2. Check the power